

# \$60,000 - 10510 Cr 128, Poncha Springs

MLS® #9564908 Listing Office Pinon Real Estate Group LLC

**\$60,000**

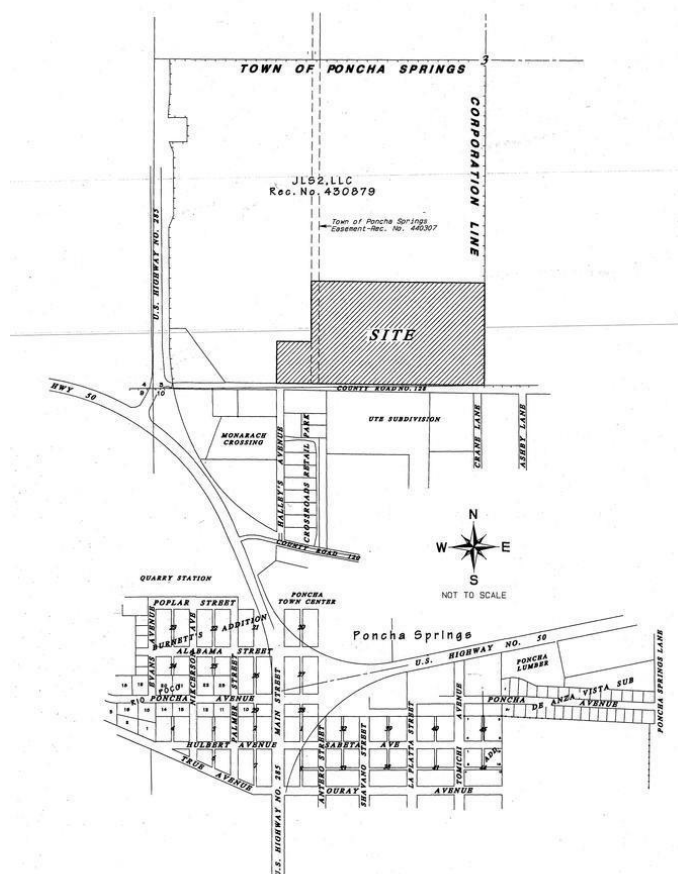
0 Bedroom, 0.00 Bathroom,  
Land on 0.11 Acres

Poncha Meadows, Poncha Springs, CO

Poncha Meadows: Gateway to Rocky Mountain Living... Poncha Meadows will be a mountain community living at its best. Along with stellar mountain views, your new community will feature parks, picnic sites, public utilities and reasonably priced home sites. Enjoy hiking, biking, fishing, skiing and miles of scenic trails. Located in Poncha Springs and minutes from downtown Salida, this neighborhood will also be a part of the highly-regarded Salida School District! Living in Poncha Meadows means you will be experiencing life at its fullest within a diverse mountain setting. Wind down your day and grab a craft beer at Elevation Brewery or be a part of Vino Salida's annual grape stomping event, just footsteps from your home. It's also the ideal location for the outdoorsman (or woman!) who wants to live unplugged but still connect with their neighbors. You never have to wait for a vacation - hiking, mountain biking, hunting, kayaking, and fishing, skiing are all a way of life here. Poncha Meadows is the perfect combination of peaceful relaxation in a location surrounded by nature and the convenience of nearby restaurants, businesses and shopping. Poncha Springs is a sizzling hot real estate market. Don't miss your opportunity to buy now while its affordable - there is truly something for everyone at Poncha Meadows in beautiful Chaffee County. More information and subdivision map is available



VICINITY MAP



**Listing Courtesy of Pinon Real Estate Group LLC**

**Essential Information**

MLS® #	9564908
Price	\$60,000
Bathrooms	0.00
Acres	0.11
Type	Land
Sub-Type	Improved Land
Status	Active

**Community Information**

Address	10510 Cr 128
Subdivision	Poncha Meadows
City	Poncha Springs
County	Chaffee
State	CO
Zip Code	81242

**Amenities**

Utilities	Cable Available, Electricity Available, Natural Gas Available
View	Mountain(s)

**School Information**

District	Salida R-32
----------	-------------

**Additional Information**

Date Listed	September 16th, 2020
Days on Market	299
Zoning	T4 - Residential

Copyright 2021 METROLIST, INC., DBA RECOLORADO® -- All Rights Reserved 6455 S. Yosemite St., Suite 500  
Greenwood Village, CO 80111 USA

Listing information last updated on April 16th, 2021 at 4:30am MDT